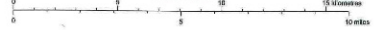
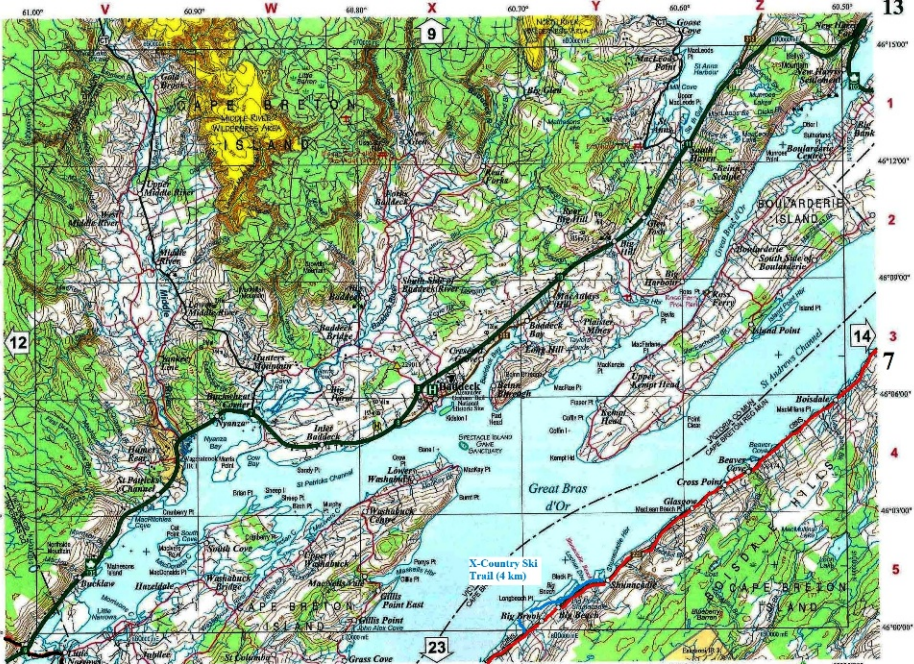


1: 150 000  
**SYDNEY**



2001 Magnetic Declination  
 20° 44.3' West  
 Annual change 8.6' East  
 Contour interval 25m  
 Projection: Zone 23 UTM Nad83



2001 Magnetic Declination  
 20° 40.2' West  
 Annual change 8.4' East

Contour interval 25m  
 Projection: Zone 20 UTM NAD83

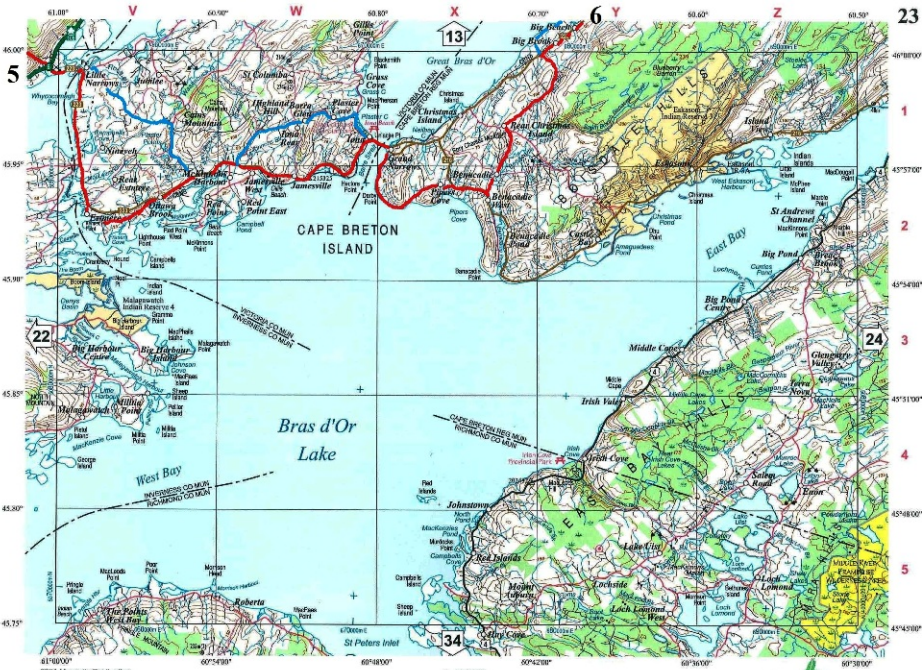
1:150 000

**BADDECK**

15 kilometres  
 10 miles

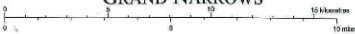
11K02



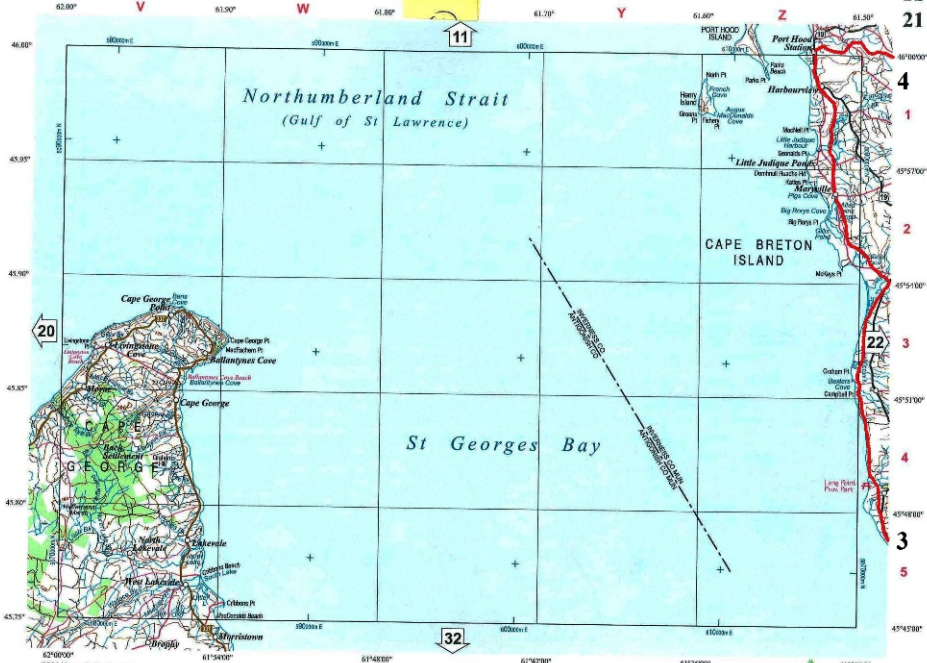


2011 Magnetic Declination  
 20° 33.1' West  
 Annual change 8.3' East  
 Contour Interval 25m  
 Projection: Zone 20 UTM NAD83

1: 150 000  
**GRAND NARROWS**







Northumberland Strait  
(Gulf of St. Lawrence)

St Georges Bay

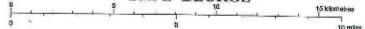
CAPE BRETON ISLAND

CAPE GEORGE

2011 Magnetic Declination  
20° 23.5' West  
Annual change 7.0' East

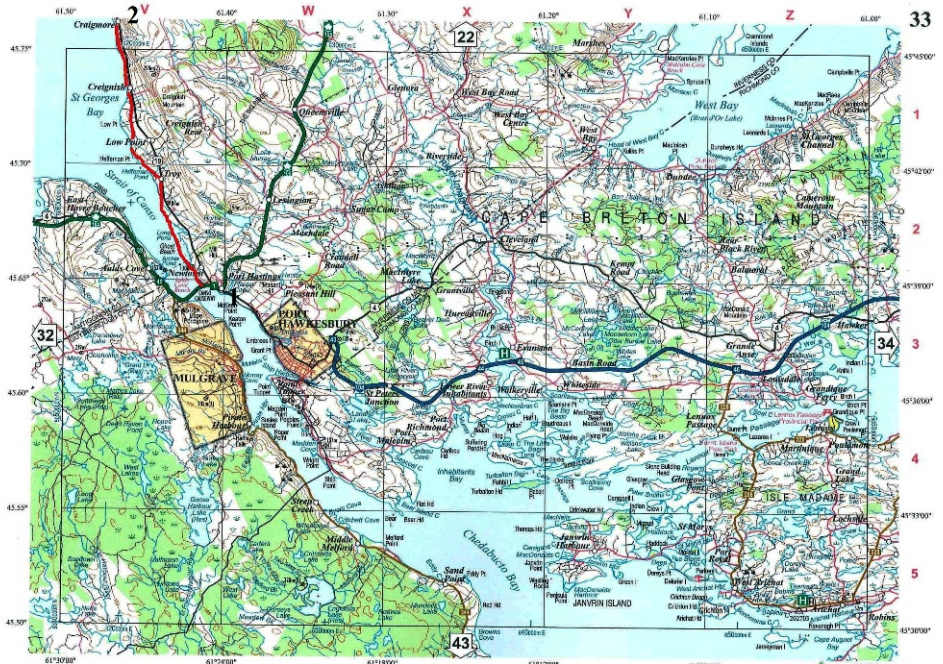
Contour Interval 25m  
Projection: Zone 20 UTM NAD83

1: 150 000





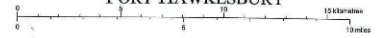




2001 Magnetic Declination  
 20° 21.7' West  
 Annual change 8.0' East

1 : 150 000  
**PORT HAWKESBURY**

Contour interval 25m  
 Projection: Zone 20 UTM NAD83

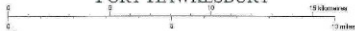






2001 Magnetic Declination  
 20° 21.7' West  
 Annual change 0.0' East  
 Contour interval 25m  
 Projection: Zone 20 UTM NAD83

1:150 000  
**PORT HAWKESBURY**



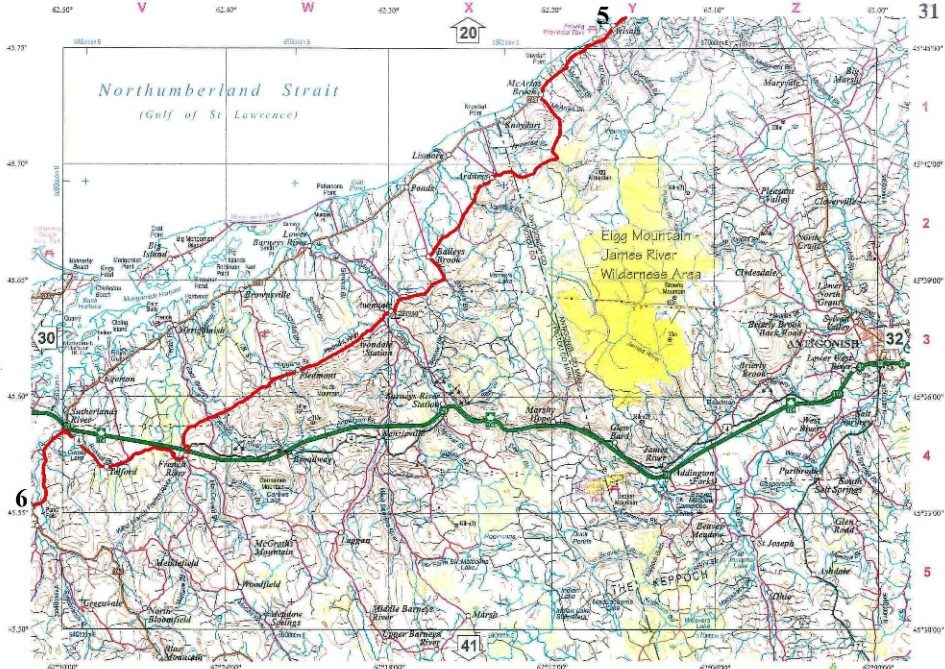






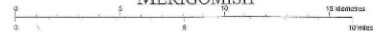


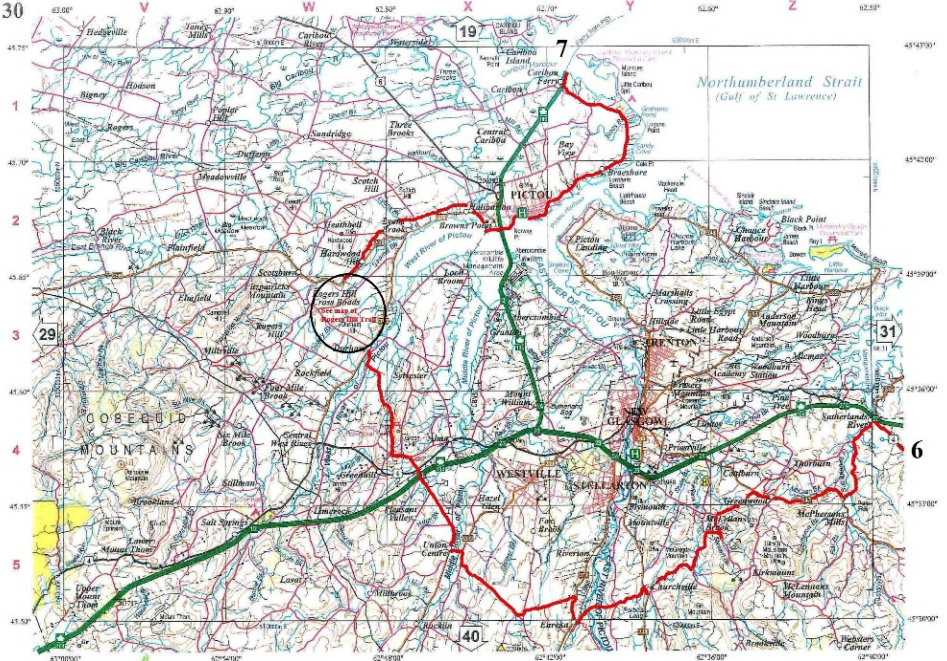




2011 Magnetic Declination  
20° 11.9' West  
Annual change 7.6' East  
Contour interval 25m  
Projection: Zone 20 UTM NAD83

1 : 150 300  
**MERIGOMISH**





Northumberland Strait  
(Gulf of St. Lawrence)

Eggers Hill  
Cross Roads  
(See map at  
Rogers Hill Trail)

NEW GLASGOW

20C1 Magnetic Coordinates  
20° 4.3' West  
Annual change 7.4' East  
Contour interval 25m  
Projection: Zone 20 UTM NAD83

